

Complete Bite Block

Instructions for Use

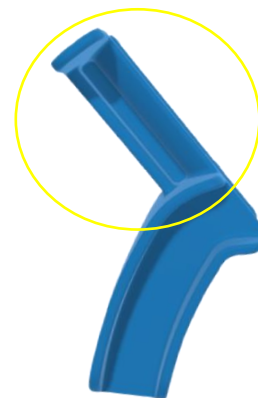
RN REMNOVA

The Remnova *Complete Bite Block* is designed for use in patients with breathing tubes and serves three main purposes. The first is to reduce patient harm associated with biting down on airway devices. The second is to help stabilize patients' endotracheal tubes thus making their airways more secure. The third is to assist airway management including intubation, extubation, visualization, suctioning and bag mask ventilation.

Proper Use of the Remnova Complete Bite Block

1. The *Complete Bite Block* can be placed prior to induction of anesthesia, after induction but before airway manipulation, or after airway manipulation. The device can be used with endotracheal (ET) tubes and laryngeal mask airways.
2. Insertion: If the patient is anesthetized, gently pull the jaw down to open their mouth wide. If the patient is awake, ask the patient to open mouth wide.
3. Grasp the handle (indicated in Image #1). The *Complete Bite Block* may be inserted on either side of the patient's mouth. To choose a side of the mouth, simply flip the device over using the handle prior to insertion. Using the handle, gently slide the device into the proper position in the oral cavity. The patient's top and bottom teeth should fit securely within the curved walls of the bite block. The molars should be positioned most distal to the handle. The handle should protrude outwards from the oral cavity.
4. The endotracheal tube can then be positioned such that it fits inside the medial notch of the *Complete Bite Block* and runs along the groove in the handle.
5. Tape can be tied around the handle (see Image #2 on next page) to further secure the ET tube.

Image #1: The Handle



Complete Bite Block

Instructions for Use

RN REMNOVA

6. The *Complete Bite Block* can be left in place for the duration of the anesthetic.
7. Removal: If the patient is anesthetized, gently pull the jaw down to open mouth wide and slide out the *Complete Bite Block* using the handle. If the patient is awake, ask the patient to open mouth wide and slide out the *Complete Bite Block* using the handle. Do not forcibly remove the device while the patient is biting down. This may have negative consequences including but not limited to dental damage or damage to the device.

Image #2: Device Demonstration

Device Demonstration



ET tube stabilized fitting along Complete Bite Block



Tape further secures ET tube with Complete Bite Block



Can be flipped and protect from either side



Device Demonstration



Complete Bite Block fits securely under mask to allow bag mask ventilation



Fits securely with oral airway inserted



Fits securely with laryngeal mask airway (LMA)



WARNINGS

- **Do not use this product if the device or the sealed packaging is not intact or appears damaged.**
- **Do not use this device if teeth appear weakened and therefore vulnerable to damage through contact with the device. The Remnova *Complete Bite Block* is only intended for use with healthy and natural teeth.**
- **Do not attempt to forcibly remove from the patient's mouth while the patient is biting on the device.**
- **This device is for use by qualified medical personnel for the intended use only.**
- **The device is not X-ray opaque.**
- **Normal hospital protocol for disposal of clinical waste should be followed for disposal of this product.**

Complete Bite Block
Instructions for Use



The Remnova Complete Bite Block is a single-use product.

Remnova LLC disclaims all liability for usage that does not adhere to the instructions provided. Remnova LLC is not responsible for damage arising from normal wear and tear; failure to follow instructions relating to the proper use of the Remnova *Complete Bite Block*; loss or theft, disassembly or alterations; accident, abuse, misuse, or other external causes; or exposure to extreme environmental conditions.

No product, to include without limitation of the Remnova *Complete Bite Block*, can guarantee complete freedom from and protection against injuries, including but not limited to dental damage, pressure injury, or oral laceration during use.

Remnova LLC will replace any visibly defective unit free of charge prior to usage (See Warranty). It is the responsibility of the medical provider to confirm that the bite block does not have any visible damage prior to usage in a procedure.

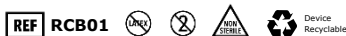
Follow All Instructions for Use
Intended for One Time Use Only
Latex Free
Not for Resale

See Warranty Information
1-202-688-5434
www.remnova.com/contact

Complete Bite Block

*Perioperative Bite Block and
Endotracheal Tube (ETT) Stabilizer*

**FDA Registered
Patent Pending**



Manufacturer:
JMS Manufacturing, Inc.
8805 Vernon Ave.
Omaha, NE, USA 68134

US Distributor:
Remnova LLC
Washington, DC, USA 20007